



INFINITI

IT Environments | Consult, Design & Supply

INFINITI designs with creativity and builds with flexibility for global company Vitec

Employing around 1,700 people in 11 different countries, Vitec is a leading global provider of premium branded solutions to the fast changing and growing image capture and sharing market.

The company designs, manufactures and distributes high-performance products including camera supports,

camera mounted electronic accessories, robotic camera systems, prompters, LED lights, mobile power, monitors and bags.

Customers include broadcasters, independent content creators, photographers and enterprises.

Case Study

Industry

Technologies range from manual camera supports, through to electronics and software for data capture.

Location

Bury St. Edmunds

Challenge

Moving a data centre to a new location

Solution

New data centre built by INFINITI in a purpose-built factory

Results

Excellent use of the space available and a project that was completed on time and within budget during a challenging time

Challenge

In January 2017, Vitec began preparing for a move to a new smaller site in Bury St Edmunds. The company was consolidating a number of functions and required less space. One element of this large-scale move was a data centre relocation. Ben Skinner, Head of Corporate Networks and Infrastructure at Vitec, managed the data centre tender process, giving interested companies a free rein and leaving the tender open to creativity.

Three companies tendered and INFINITI was successful in winning the work. "I was keen to see a range of creative ideas," said Ben. "Price was also a factor of course. INFINITI gave us a good price and some really creative ideas on how to best use the space available. We preferred INFINITI's design and approach to the brief, and decided to progress the project with them."

Ben accurately predicted that installing the data centre while construction companies were working on site would prove to be a considerable challenge. The INFINITI team would need to be flexible with stopping and starting work when required, to allow the office build to take place.

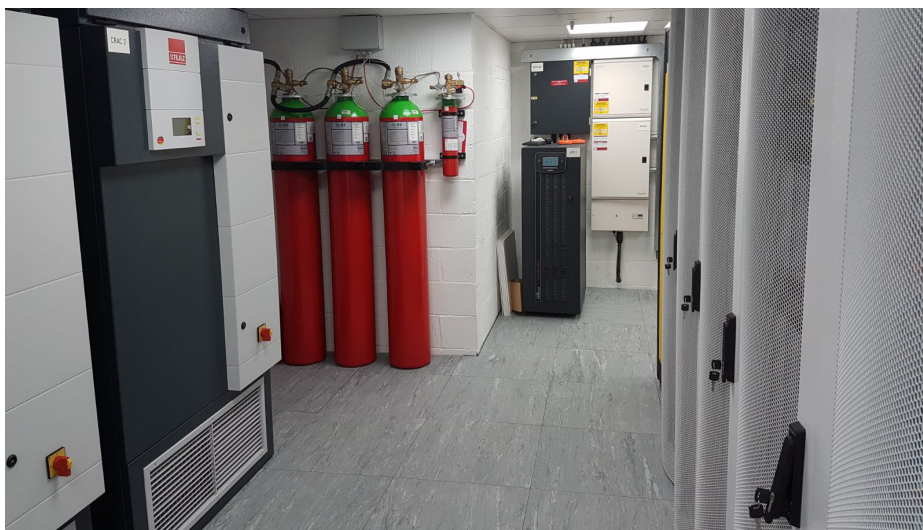
Solution

INFINITI began the project in June 2017. The data centre was designed to facilitate future growth, with specifications to support expanding operations by up to 33%. The work included:

- Design and build of a new data centre to accommodate the relocation of business operations
- Design, installation and provision of one-hour fire rated block up doorways, security door and heavy duty anti-static vinyl flooring
- Provision of UPS 30kVA/ 27kW, bypass panel and electrical systems, design and installation of electrical systems and 100kVA generator
- Design and build of non-critical electrical systems, lighting, fire and security systems and resilient cooling systems

- Provision of eight server cabinets
- Design and installation of fire suppression systems
- Environmental Monitoring System and certified CAT6 data systems within the data centre





Results

The entire project was completed on time before September 2017 and within the budget. The INFINITI team were understanding and flexible in their approach to the difficult conditions, with builders needing to make progress on the adjacent office build so staff could move in before the deadline. "We have high standards and we completely appreciated the flexibility shown by INFINITI," says Ben. "We now have a fantastic room that works well and looks impressive."

Ben was also particularly pleased with:

- The way the INFINITI team used the space
- The design of the airflows
- How the room is managed
- The raised floor that was not part of the original plan but was created with flexibility and patience

Ben believes he made an excellent decision in choosing INFINITI and would recommend them to anyone involved in a challenging data centre project.

Testimonials

"I would definitely recommend INFINITI. They have a great hard work ethic and are reliable and easy to liaise with. They also implemented everything that was promised when they said it would be. I found it reassuring to be able to speak to the company director Peter Sands whenever I needed to and he always responded quickly."

Ben Skinner, Head of Corporate Networks and Infrastructure, Vitec

"This was an interesting and challenging project for the INFINITI team yet we work well under pressure and we rose to the challenge. Providing an outstanding customer experience is a priority for us and I believe we did this for Vitec through a creative design that was implemented with efficiency and flexibility."

Peter Sands, Managing Director, INFINITI

To find out about the data centre benefits we could bring to your organisation please get in touch.

01993 77 44 44

info@infiniti-it.co.uk
www.infiniti-it.co.uk